



Center Without Walls Program FORUM PANELISTS

MS Forum and Expo | Saturday, June 3, 2023

Fairmont Century Plaza

10:00 am

and available via Zoom Webinar

https://us02web.zoom.us/webinar/register/WN_YpD3bA_9SeuOx18plx3g

Lilyana Amezcua, M.D. – USC



Dr. Amezcua is an Associate Professor of Neurology, fellowship program director and recently appointed the Diversity Equity and Inclusion Champion at the University of Southern California (USC), Keck School of Medicine. She received her Bachelor of Science degree from University of California Irvine in Irvine, California, her medical degree from Jefferson Medical College in Philadelphia, Pennsylvania, followed by neurology residency and clinical fellowship in neuroimmunology and multiple sclerosis at USC. She received her Master of Science degree in clinical, biomedical, and translational science from USC, Preventive Medicine, under a Clinical Translational Science Institute NIH KL2 award. Her research is focus in racial and ethnic health disparities including modifiable (from non-modifiable genetic factors involved in disease severity and progression of MS. She has received numerous awards including induction into the Health Professionals Hall of Fame (2015) and National Health Care Champion.

Jack Antel, M.D. - McGill University



Jack Antel is a clinical neurologist who coordinates the multiple sclerosis research and treatment program at the Montreal Neurological Institute. He is a Professor at McGill University where he has served as Chairman of the Department of Neurology and Neurosurgery. Prior to his work at McGill, he was a Professor of Neurology at the University of Chicago. He was Chairman of the Medical Advisory Board of the Multiple Sclerosis Society of Canada from January 2004-2007. From 2007-2015 he was the National Scientific Director of the endMS Research and Training Network supported by the MS Society of Canada. From 2004 to 2006 he served as President of the International Society of Neuroimmunology. He was president of ACTRIMS (American Committee for Research and Treatment of Multiple Sclerosis) from 2016-2019. From 2006-2019, he served as the Editor for the Americas of the Multiple Sclerosis Journal. His research interests include understanding the mechanisms of tissue injury and repair that account for the characteristic disease course of multiple sclerosis and how these can be therapeutically targeted. Dr. Antel was the recipient of the 2005 Dystel Award from the National Multiple Sclerosis Society and the American Academy of Neurology.

Peter Calabresi, M.D. – Johns Hopkins



Peter A. Calabresi, MD is a Professor of Neurology, Neuroscience, and Ophthalmology at the Johns Hopkins School of Medicine and Director of the Division of Neuroimmunology and Neurological Infections and Co-Director of the Johns Hopkins Multiple Sclerosis Precision Medicine Center of Excellence. He attended Yale College and Brown Medical School, and trained in Neurology at Strong Memorial Hospital in Rochester, NY and Neuroimmunology at the NIH in Bethesda, Md. Dr. Calabresi has been the principal investigator or scientific advisor on several global phase 2 and 3 clinical trials. He has designed and directed several clinical trials investigating combination drug therapies in MS. Dr. Calabresi also mentors trainees and oversees translational laboratory research projects. His laboratory studies how to stop the immune attack and arrest neurodegeneration, and also strategies to promote myelin repair.

Dr. Calabresi has served on the Editorial Boards of the *Journal of Clinical Investigation*, *Neurology*, and the *Multiple Sclerosis Journal*. He served as Chair of a grant review committee of the National Multiple Sclerosis Society and was a standing member of the NIH Clinical Neuroimmunology and Brain Tumors Study Section. His specific laboratory research interest lies in understanding the mechanisms of T lymphocyte differentiation into effector memory T cells and how these T cells interface with glial cells in the brain to modulate remyelination. Dr. Calabresi has published over 400 research papers including numerous articles on imaging and the immunopathogenesis of MS. He was the recipient of a five-year NMSS Collaborative Center grant from the National MS Society to study endogenous remyelination in MS, and the Jacob Javits Neuroscience Investigator award from the National Institutes of Health. Dr. Calabresi is a member of AOA, and was co-awarded the Barancik prize for innovation in MS research in 2015, and was elected to the American Association of Physicians in 2017.

David Hafler, M.D. - Yale



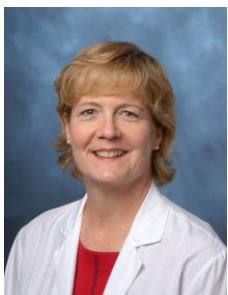
David A. Hafler, M.D. is the William S. and Lois Stiles Edgerly Professor and Chairman Department of Neurology and Professor of Immunobiology, Yale School of Medicine, and is the Neurologist-in-Chief of the Yale-New Haven Hospital. He graduated magna cum laude in 1974 from Emory University with combined B.S. and M.Sc. degrees in biochemistry, and the University of Miami School of Medicine in 1978. He then completed his internship in internal medicine at Johns Hopkins followed by a neurology residency at Cornell Medical Center-New York Hospital in New York. Dr. Hafler was trained in immunology at the Rockefeller University and then at Harvard where he joined the faculty in 1984 and later became the Breakstone Professorship of Neurology at Harvard and was a founding Associated Member of the Broad Institute at MIT. In 2009 he moved to Yale as the Chair of the Department of Neurology. Dr. Hafler is a clinical scientist with a research interest in the mechanism of multiple sclerosis with over 400 publications in the field of MS, autoimmunity and immunology. He is a co-founder of the International MS Genetic Consortium a group that identified the genes causing MS. He has served as a member of the editorial boards for *Journal of Clinical Investigation* and the *Journal of Experimental Medicine* and is co-founder of the Federation of Clinical Immunology Societies and leads the NIH Autoimmunity Prevention Center Grant at Yale. He was a Jacob Javits Merit Award Recipient from the NIH and has won many awards including Dystel Prize for MS research from the American Academy of Neurology, the University of Miami Annual Distinguished Alumni Award, the Raymond Adams Prize from the American Neurologic Association, and was the 2016 Frontier Lecturer at the AAN. Dr. Hafler has been elected to membership in the Alpha Omega Society, the American Society of Clinical Investigation, and the National Academy of Medicine.

Adam Kaplin, M.D, Ph.D. – Johns Hopkins



Dr. Adam Kaplin graduated magna cum laude from Yale University before receiving his medical degree and Ph.D. from The Johns Hopkins School of Medicine, where he was a Medical Science Training Program awardee. He went on to complete an internship in internal medicine at Johns Hopkins Bayview Medical Center and a residency in psychiatry at Johns Hopkins Hospital, where he served as the chief resident of psychiatry. Now an Assistant Professor of Psychiatry at Johns Hopkins, Dr. Kaplin focuses on the psychiatric complications of neurological diseases. He researches the immune-mediated mechanisms of depression and cognitive impairment in transverse myelitis, multiple sclerosis and related autoimmune neurologic disorders, and the role of cytokines in these processes. He is on the board of medical advisors to the Transverse Myelitis Association (TMA) and the Montel Williams MS Foundation. Dr. Kaplin is the inventor and co-developer of www.mood247.com, an automated Web and SMS coordinated mood tracker and mobile electronic health diary."

Nancy L. Sicotte, M.D. – Cedars-Sinai



Nancy L. Sicotte, MD is professor and vice chair for education in the department of Neurology at Cedars-Sinai Medical Center. She is the Director of the Multiple Sclerosis Program and founding Director of the Neurology Residency Training Program. She is also the site director for the third-year UCLA medical student neurology clerkship rotation. Dr. Sicotte graduated with honors from Brown University with a BS in Psychology. She earned her medical degree from University of California Irvine School of Medicine and completed an internship in internal medicine, residency in neurology and fellowship in neuroimaging at UCLA Medical Center and has been a member of the faculty since 1999. Since joining the department of neurology at Cedars-Sinai Medical Center in 2010, Dr. Sicotte has developed an integrated multiple sclerosis program that includes patient care, education and research. Her research focuses on the use of advanced structural and functional imaging to study MS disease progression including cognitive impairment and depression. She is a founding member of the North American Imaging in MS (NAIMS) Cooperative, which utilizes state of the art imaging approaches across multiple centers in the US and Canada to develop reliable imaging markers of disease progression in MS. She has received numerous awards including Best Doctors in America. She has been a member of the volunteer faculty at the Venice Family Clinic since 1998.

Rhonda Voskuhl, M.D. - UCLA



Rhonda Voskuhl, M.D. received her MD from Vanderbilt University, did neurology residency at the Univ. of Texas Southwestern, and MS fellowship at the National Institutes of Health (NIH). Dr. Voskuhl is the Director of the MS Program, the Jack H. Skirball Chair in MS Research, and Professor of Neurology at the University of California, Los Angeles (UCLA). Dr. Voskuhl was a recipient of the Harry Weaver Neuroscience Scholar Award and was PI of two separate five-year MS Collaborative Center Awards from the National MS Society. She is an internationally recognized expert in MS, doing translational work from the bedside (clinical observations) to the bench (research) to the bedside (novel clinical trials). Dr. Voskuhl has led four novel clinical trials testing new treatments based on results from her laboratory. She received the UCLA Innovation Award in 2018, as well as the Berlin Institute of Health (BIH) Excellence Award for Sex and Gender Aspects in Health Research in 2018, a global award spanning all areas of health research. Dr. Voskuhl was selected for the Kenneth P. Johnson Memorial Lecture Award for MS research by ACTRIMS in 2019. She serves on Advisory Boards for the U.S. Department of Defense MS Research Program and the German Neurocure Clusters of Excellence. Dr. Voskuhl's clinical work focuses on MS diagnosis and treatment management. Her laboratory is currently funded by the NIH to discover neuroprotective treatments targeting cells in the central nervous system to reduce disabilities in MS patients.

Emmanuelle L. Waubant, M.D., Ph.D. – UCSF



Emmanuelle L. Waubant, MD, PhD, received her medical degree at the University of Lille, France. She then trained in France as well as at the University of California, San Francisco (UCSF) in adult neurology, neuroimmunology and MS clinical research. She is currently Professor of Neurology and Pediatrics at UCSF. She has served as the Race to Erase MS medical director since 2001. She also directs the Regional Pediatric MS Center at UCSF and is the secretary for the American Committee on Treatment and Research in MS. Dr. Waubant serves or has served on the clinical care, fellowship and research grant review committees of the National Multiple Sclerosis Society and on the advisory board of the Society's

Northern California Chapter. She is the Chair of the Clinical Trial Task Force of the International Pediatric MS Study Group. She is a member of the International Pediatric MS Study Group Steering Committee. She is ACTRIMS president-elect. She also directs several translational research projects and mentors medical students, fellows and junior faculty on various clinical, research and career development aspects in the field of MS and related diseases. In 2018, Dr. Waubant started an international consortium (international Women in MS) to foster a community of clinicians and scientists, and contribute to mentoring and blossoming of junior women in the field of MS. Dr. Waubant's specific interests include the translation of promising agents from the bench to bedside to advance patients' care, and risk factors for MS susceptibility and disease modification in pediatric and adult MS.

Howard Weiner, M.D. – Harvard



Howard L. Weiner is the Robert L. Kroc Professor of Neurology at the Harvard Medical School, Director and Founder of the Partners MS Center and Co-Director of the Ann Romney Center for Neurologic Diseases at Brigham & Women's Hospital in Boston. The Partners MS Center is the first integrated MS Center that combines clinical care, MRI imaging and immune monitoring to the MS patient as part of the 2000 patient CLIMB cohort study. He has pioneered immunotherapy in MS and has investigated immune mechanisms in nervous system diseases including MS, Alzheimer's Disease, ALS, stroke and brain tumors. He has also pioneered the investigation of the mucosal immune system for the treatment of autoimmune and other diseases and the use of anti-CD3 to induce regulatory T cells for the

treatment of these diseases. As part of his interest in the mucosal immune system, he is investigating the gut microbiome in MS. He is the author of the book CURING MS and the award winning film documentary WHAT IS LIFE? THE MOVIE. In 2004, Harvard Medical School honored him with the establishment of the Howard L. Weiner Professorship of Neurologic Diseases. Dr. Weiner is the 2007 recipient of the John Dystel Prize for MS Research and the Koetser Memorial Prize for Brain Research. In 2012 he received the NIH Director's Transformative Research Award for investigating the innate immune system in Alzheimer's disease.

Lindsey Wooliscroft, M.D., M.Sc., M.C.R. - Oregon Health & Science University



Dr. Lindsey Wooliscroft is an Assistant Professor of Neurology at Oregon Health & Science University (OHSU) and Associate Director of Research for the VA Multiple Sclerosis (MS) Center of Excellence-West. She received her medical degree from Texas Tech University HSC in Lubbock, TX. She completed her neurology residency at Washington University in St. Louis and her fellowship in Neuroimmunology at OHSU and the Portland VA. She receives research funding from the NIH NCMRR, VA, EMD Serono, Myelin Repair Foundation, Oregon Medical Research Foundation, and OHSU Foundation and her research interests include rehabilitative approaches to myelin repair in people with MS.

Panelists with MS:

Nancy Davis (Founder of Race to Erase MS)



Nancy Davis, one of five children, was born and raised in Denver, Colorado. In 1987 she moved to California and now resides in Los Angeles with her husband and children. She is an extremely dedicated philanthropist, jewelry and now clothing designer and author. Most importantly, she is a full-time mother who is devoted to her five children. Nancy was diagnosed with multiple sclerosis at the age of 33 in 1991. After being told by her doctors that she would be “lucky” to operate a remote control on her TV, she realized she was too young and too busy to let the disease stop her life in its tracks. She was determined to devote her time, relationships and resources to finding a cure. Nancy’s hope, courage and strength continue to inspire her to maintain a vibrant quality of life despite this chronic disease, but most of all, she remains positive, continues to live her life to the fullest, and is tireless in her efforts to finding the cure for MS.

Claudia Curry Hill (Moderator)



Claudia Curry Hill was diagnosed with Primary Progressive MS over 30 years ago. An activist for women’s health and the disabled, she is very active in founding and serving on Non-Profit and Community Boards and Committees, including the Race to Erase MS and the Colorado, Wyoming MS Society Government Relations Committee and is a spokesperson for Multiple Sclerosis. Claudia is married, the mother of three and the owner of CCH Connections, a non-profit and event consulting group in Colorado. She believes that exercise, a positive attitude and empowering yourself with all the information you can find to improve your quality of life.